

## Top Stories for the Spring Newsletter



2017 AAFSLW CONFERENCE TEASER

Being Human

Inside an OutReach

HEALTHY MINDS—  
HEALTHY CHILDREN

SUBMITTED ARTICLES



AAFSLW EXECUTIVE

## Year End Greetings from the AAFSLW President

A lot has happened since I was elected as Vice-President at last year's AAFSLW Conference in Banff. Since January, I have moved into the position of President, but the transition has been smooth with the help of our amazing executive committee members. It has been exciting to take on this role, as I have worked as a Family School Liaison in rural school settings for 17 years. It is also an exciting time for our AAFSLW as our professional association moves into its 26<sup>th</sup> year of operations. One of our many goals is to provide advocacy, support and resources to FSLW's that are supporting our Province's students and families.

I realize this last month is a busy and hectic time for most of us. I hope that some of you will be able to reflect on the powerful and important impact you have had on students and families that you have worked with over this past school year. Our work is challenging, demanding and can sometimes go un-noticed, know that the work you do is valuable and important.

I hope all of you will have an enjoyable, restful and rejuvenating summer. Please check out our AAFSLA Website for details on our 26<sup>th</sup> Annual Conference scheduled for September 27-29 in Grande Prairie. Our Conference Committee has been working hard to organize a great line up of speakers and opportunities to network with other Family School Liaison Workers. I hope to see you in Grande Prairie in September.

Lisa Morris, B.A., M.A.  
AAFSLW Executive President



## \* Membership Renewal \*



Is your membership up to date? If you are paying your membership online with PayPal, please complete a renewal form or new membership form.

The electronic version is available on our AAFSLW website

<http://ww.aafslw.ca/> Please email our membership worker directly. If you

are renewing for more than one person, **each** person submits their own

renewal form. There are pdf. copies of the forms on our website

<http://ww.aafslw.ca/> that you can print and fax if you prefer.

Remember: Fax or email for **each** person renewing a membership. Please

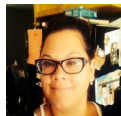
note, both payment and renewal form will need to be completed prior to

your membership being processed.



### **President**

**Lisa Morris** has worked as a Family School Liaison Worker for over sixteen years. Her career started with the Student Health Initiative Partnership in 2010, where she worked with rural students in grades K-12 in Parkland County and Grande Yellowhead schools. Lisa has also worked with Pre-schoolers and Kindergarten students in the 100 Voices program with the Edmonton Catholic School Division. Most recently, Lisa has worked in the rural schools of Blackgold School Division, grades K-12. Currently Lisa is a Family Wellness Worker with the Wild Rose School Division working with Senior High students at Frank Maddock High school and the Drayton Valley Community Outreach School. Lisa and her husband live in the Hamlet of Keephills, they have successfully raised four children to adulthood and are enjoying their first granddaughter.



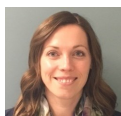
### **Past President**

**Christie Badry** is a Supervisor of the Family School Liaison Worker and CHAMP programs in Camrose Alberta. Christie has been part of the executive in the past and is excited about being part of the team.



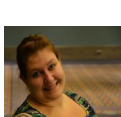
### **Treasurer**

**Eva Rasmussen** has been a Family School Liaison Worker for Wetaskiwin Regional Public Schools for 11 years. This is her seventh year on the AAFSLW executive. Eva enjoys her position as Treasurer of the Alberta Association of Family School Liaison Workers.



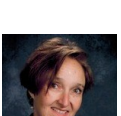
### **Secretary**

**Lana Clarke** has been a Community School Liaison Counsellor with the County of Grande Prairie FCSS, since 2007. Previous to that she was an FCSS Community Programmer for the Town of Beaverlodge, and a Child Care Counsellor/Day Program Manager for Mountain Plains Youth Group Homes. She is looking forward to being on the executive and the province-wide networking opportunities that will coincide.



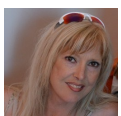
### **Membership Worker**

**Kelsie McCabe** "I have been working for FCSS as a Family School Liaison since 2012. I enjoy the outdoors and I like to experience new things. I am excited to take on this new opportunity as an executive member."



### **Public Relations - Newsletter—Julie Isaac**,

has been with Livingstone Range School Division for 15years. "I've been lucky to have experienced different schools, grades and teams. I look forward everyday to the connections we all make that are fulfilling and excitingly unpredictable!" Julie's Masters' Degree is Sport Psychology which she has enjoyed practicing for 18 years. "I am enjoying my sixth year serving as an Executive member!"



### **Public Relations & Website**

**Christine Payne** is a Family School Liaison Worker working for Foundations for the Future Charter Academy. She has worked in the Social Work field for over 20 years and over half of those years have been spent working with students. She also spent part of her career as a Public Education Worker in Mental Health and worked within the Welfare divisions in Ontario with single parents and families. This is Christine's eighth year serving on the AAFSLW executive. "It has been an awesome opportunity to connect with so many passionate caring people pouring their lives into the well-being of students and families across this province. I feel privileged to help bring resources and guidance through the AAFSLW."

*If you are interested in serving on the*

*Alberta Association of Family School Liaison Workers*

*Please contact any member of the executive.*



## Conference Teaser

### Shawn O'Grady, MSW RSW

Shawn brings a great deal of expertise in designing and overseeing treatment programs for children and families, as he draws from his experience in child and family treatment programs at Hull Services over the past 19 years. Shawn is currently the Director of the Preadolescent Treatment Program at Hull Services. He has trained extensively with Dr. Bruce Perry and the Child Trauma Academy in the Neurosequential Model of Therapeutics (NMT) in the area of early childhood trauma and the ways that can impact children and even adults later in life. Shawn also has a specialty in parental capacity assessments, with a particular focus with families struggling as a result of domestic violence, high-risk child behaviour, and complex needs children. He has considerable skill and expertise in the area of crisis intervention and in family counseling, and he draws heavily on his understanding of other treatment and assistance programs to create plans that will help families. Shawn received both his Bachelors and Masters of Social Work with a Clinical Specialization from the University of Calgary and is a registered social worker with the Alberta College of Social Workers.

