

**SPECIAL POINTS
OF INTEREST:**

- Greetings from the executive and President's Report
- 2011 –2012 AAFSLW Executive
- Long service awards
- Web site link
- 2011 Conference report
- Hosting 2012 conference
- Resources

2011—2012

AAFSLW Executive

President

Jody Evans

jevens@cumtygp.ab.ca

President Elect

Julie Isaac

issacj@lrsd.ab.ca

Past President

Sharon Mills

smills@st-albert.net

Membership

Christine Payne

christine.payne@ffca-calgary.com

Treasurer

Eva Rasmussen

rasmussene@wrps.ab.ca

Secretary

Christie Badry

cbadry@brsd.ab.ca

Public Relations Newsletter

Bonita Bourlon

bourlonb@lrsd.ab.ca

Public Relations Website

Danielle Beeson

dabees@telus.net

AAFSLW LIAZER

VOLUME 1, ISSUE 4

DECEMBER, 2011



Greetings from the Executive and President's Report

Season's Greetings!

With the passing of our 20 Year Anniversary, we are reminded of the solid foundation the AAFSLW has inherited and is now looking forward to continue building a vibrant organization that meets the needs of our members into the future.

It is with this vision that the Executive established two main goals for this year:

Enhance Membership Service

Increase Membership to the Association

The first goal to *Enhance Service to our Members* will focus on providing more resources and networking opportunities to You! Under this we have talked about including Resource Links/ Tools on our Web Site, providing merchandise options, if desired, and a password protected section to secure membership information that could be shared among members. A membership survey has been attached to this Newsletter for you to provide feedback on what services you would like to see. Please take the time to give us your input so that we can make best decisions possible.

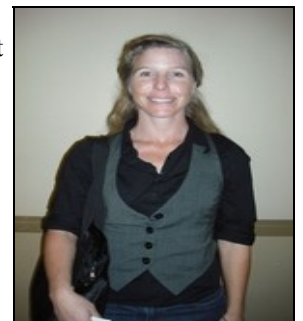
The second goal is to *Increase our Membership*. Currently we lack member representation from all districts within the Province. We have known this for years – but have not had the ability to address it. The Executive is developing an Action Plan around this, identifying gaps and constructing a list of contacts and events to promote the organization. If you have information about FSL staff that are not members – and may not know about the Association – please contact a member of the Executive to have their names and/or

departments added to our list. We appreciate any support you can offer in working on this task.

Thank you for the many contributions that you as a member have offered. Over the years, many of you have been involved as Executive Members or sat on Conference Committee's - and we couldn't do it without you!

On behalf of the AAFSLW Executive, I would like to wish you and your families a wonderful holiday season and am looking forward to an amazing year ahead!

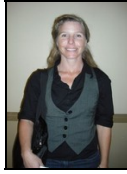
Jody Evans,
AAFSLW President



**ALBERT ASSOCIATION
OF FAMILY SCHOOL
LIAISON WORKERS**

<http://www.aafslw.ca>

Current Executive Bio's



President

Jody Evans is a Community School Liaison for the County of Grand Prairie FCSS and has worked the past three years providing services to four schools in the Peace Wapiti School Division and one Charter School. She is currently serving her third year on the AAFSLW Executive and is currently the President. She enjoys working with the other executive members from across the province and appreciates the networking opportunities and access to a wide variety of resources within the association.



President Elect

Julie Isaac has been with the Livingstone Range School Division as a Family School Liaison Counsellor for 10 years. Previous to that she enjoyed working for Golden Hills School Division and Alberta Mental Health. Julie is a Sports Psychology Consultant and was a Competitive Figure Skating Coach for 17 years. This is Julie's first year serving on the AAFSLW Executive. isaacj@lrsd.ab.ca 403-625-1061



Past President

Sharon Mills is a Family and School Liaison Worker for the City of St Albert, FCSS. She started part-time in 1990 and has been full time since 1994. Sharon and one other FSLW provide services to 27 St Albert schools and to the community. Sharon was involved at the onset of the development of the AAFSLW and has served as President for a 5 year period in the early/mid 1990's. She has also been involved in organizing two AAFSLW conferences along with other regional FSL's and hosts a Regional FSLW Networking meeting at least twice a year. Sharon has also been involved with the development and updating of the Recommended Pay Grid for FSLW'S. smills@st-albert.net 780-459-1699



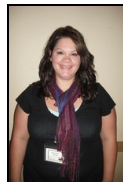
Membership

Christine Payne is a Family School Liaison Worker working for Foundations for the Future Charter Academy. She previously worked for Golden Hills School Division and within the education system in Ontario. She also has experience within the Mental Health system. This is Christine's third year serving on the AAFSLW executive. She is excited to see the new members joining as the AAFSLW expands and appreciates the commitment of the executive and the membership! christine.payne@ffca-calgary.com 403-253-9257 Ext 218



Treasurer

Eva Rasmussen has been a Family School Liaison Worker for Wetaskiwin Regional Public Schools for 8 years. This is her third year on the AAFSLW executive. Eva enjoys her position as Treasurer of the association and she looks forward to a great year. rasmussene@wrps.ab.ca 780-678-6250



Secretary

Christie Badry is the Supervisor of the Family School Liaison Workers with Battle River School Division located in Camrose. Christie has been a Family School Liaison Worker for 9 years. This is her third year on the executive as Secretary. She has enjoyed working with the executive and looks forward to the upcoming year. cbadry@brsd.ab.ca 780-672-6808 Ext 2



Public Relations Newsletter

Bonita Bourlon is a Family School Liaison Worker with the Livingstone Range School Division for the past 11 years. Past experience includes 30 years as a Psychiatric Nurse., working in day therapy, inpatient, community mental health, brain injury unit ,family violence prevention and community facilitation This is Bontia's first year on the AAFSLW Executive. She looks forward to her new role . bourlonb@lrsd.ab.ca 403-627-8230



Public Relations Website

Danielle Beeson is a Family School Liaison Worker with Family and Community Support Services (F.C.S.S.) in Barrhead. She works in the Pembina Hills School Division. Danielle has been working in her position for 5 years. This is her first year on the AAFSLW executive. She is happy to work on the website for the association and looks forward to her role on the executive. dabees@telus.net 780-674-3341

Long Term Membership Awards

HUGE CONGRATULATIONS to the following AAFSLW Members Award Recipients.



5 YEARS

Dawn Riley

Cheryl Balay

no 10 or 15 yr recipients at this time

WOW * 20 YEARS*

Angila Chase

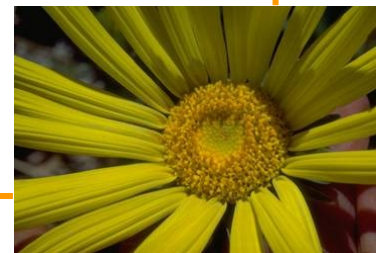
Sharon Mills

Kathy Rudyk

Lisa Trembath

Point to ponder!

The greatest results in life are usually attained by simple means and the exercise of ordinary qualities. These may for the most part be summed up in these two: common sense and perseverance. Owen Feltham



Thank You to the 2011 Conference Committee

This year's conference was a great success! Thank you to the Grande Prairie Family School Liaison Group for a job well done.

The conference survey results indicated that 94% stated they "will attend or recommend someone else attend next year's conference". The setting and location of the conference also rated high with 87% reporting that they were "very satisfied" with the location. Many people commented on the quality of guest speakers and especially enjoyed the key note speaker – Dr. Stephan Genuis. Overall satisfaction with the community based facility results came out with 71.5% of responses being "satisfied" to "very satisfied", 21.5% stated they were "somewhat satisfied" and 7% were "dissatisfied". The balance between offering a nice venue with quality speakers at a reasonable rate is always a challenge.

Thank you to everyone that attended. It was wonderful opportunity to see each other again and have some inspiring learning opportunities.

Jody Evans BSW, RSW
Community School Liaison
County of Grande Prairie - FCSS
C: 780-831-9523
Email: jevans@countypg.ab.ca

About Family Life Works (FLW) Inc.

Sandy Shuler, B.S.W.; R.S.W.; C.C.F.E.; is the Director, Consultant of FLW Inc.

She is a dedicated human service professional with over thirty years of experience in social service and family life education delivery in Calgary, with a proven record of accomplishment through awards and recognition for many achievements. Sandy is an effective leader with expertise in communication, facilitation, problem-solving, collaborative and management skills. Personal attributes such as insightful, self-directed, motivated, energetic and engaging contribute to her being highly regarded in the greater Calgary community and beyond.

She is a registered social worker through the Alberta College of Social Workers, a Certified Canadian Family Educator and a life-long learner having completed over seventy additional professional development courses and credits to her achievements.

Sandy's professional associations include The Stay Focused Group of Parent/Family Educators, The Parenting Task Force of "Upstart", A Calgary United Way Initiative and The Canadian Association of Family Resource Programs Canada.

Sandy says about her work: "that it is a privilege to work with individuals, families and organizations to help facilitate change, foster insights and support well being".

Sandy considers Calgary home and in her personal life is: married; mom to five children / step-children and loves to golf, cook, travel and socialize.

You can reach Sandy at her website: <http://www.familylifeworks.ca/About.html>

email: sshuler@shaw.ca Or telephone: (403) 540-5608

(Apologies for not being able to attach her photo)

Information to look for in the next newsletter!

- Exciting information on "Who's hosting 2012 conference and where."
- Important links to wonderful websites
- Idea corner (those ideas that you use over and over and want to share)
- Professional development opportunities
- Anything I missed from this issue (oops)

If you have any information you would like to share with others this is the place so forward them to me and our newsletter could become one of the next amazing wonders of the world!

Thanks for taking a peek!

Bonita

bourlonb@lrds.ab.ca